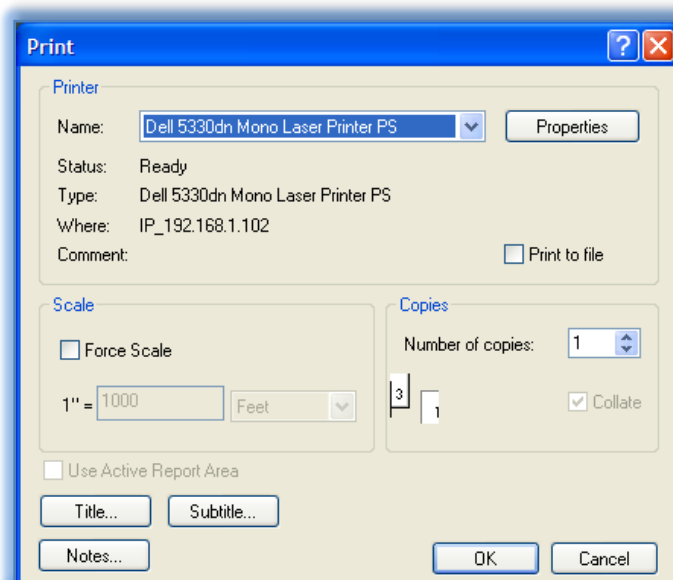
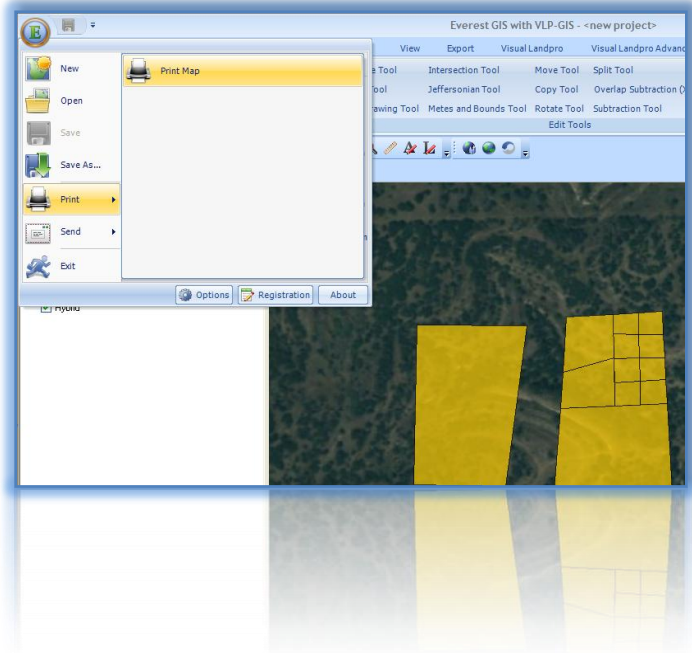


Printing Maps

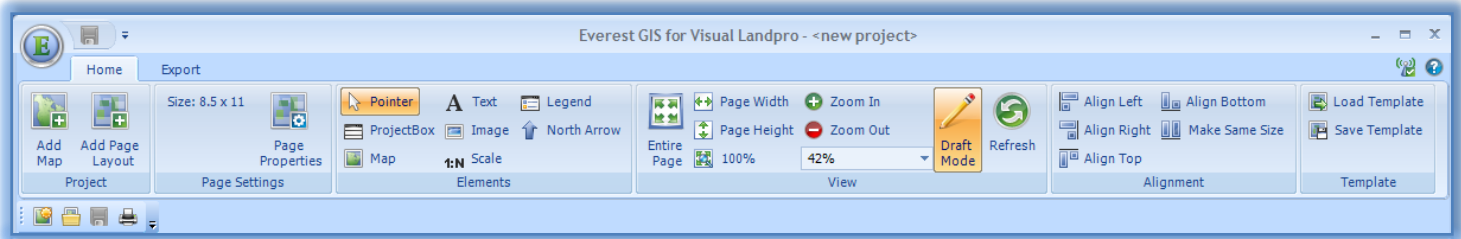
To print a map in Everest, you have two options. Option one is to use the quick print feature; or using the page layout of the program you can design and create a page that is exactly how you would like it.

In Everest you can print from the application menu, instead of going through the page layout. It is quick and simple.

From the applications menu, simply select print, and then print map.



Now you select your printer from the dropdown, if you would like to change your force scale. Check the box and select the scale that you would like. And "Select Ok."



The page layout help users to create professional map by giving you total control of how you would like to step up your map. There are many types of elements that can be added and positioned to your specification. You are also given control of the properties of the elements to change font color and styles.

Looking at the ribbon in the page layout you can see all the icons available. Below the ribbon is the actually page that you will be drawing and setting up the elements on.

This is the default style of the page layout, but you can easily delete and create your own.

